



PVC-U Casing Pipes

PVC Casing Pipes, developed according to customer requirements in compliance with TS 11794 and DIN 4925 standards from PVC raw material and are being manufactured as blank and filtered type. Hatboru PVC Casing Pipes easily mountable by its special design and has long life-time by its special formula, and has two types which resists up to 100 and 300 meters depth.

PVC-U CASING PIPES USING INSTRUCTION

- Scientific documentation and technical data should be used during opening wells and at every stage from site location to selection of pipes.
- Pipes which will wait to be used should be put on wooden wedge and they should be covered and stored at shadow.
- Pipes should not hit the ground during loading and transporting, and especially threads on the heads should be protected.
- Protector on the male head threads should not be removed until pipe is lowered to the protector.
- Pipes should be thoroughly inspected finally when they shall be installed, and pipes with visual defects should not be installed.
- Pipes should be selected according to appropriate pump, the well diameter, which will be opened, must be appropriate to the pipe.
- Pipe threads should not be covered with grease, etc. lubricants for easy installation, water and soap are enough for this process.
- Pipe threads should not be covered with adhesives in order to maintain good attachment. Adhesives disturb threads and dissolve the pipe.
- Appropriate tools, such as belted tightening wrench and which are not damaging the pipes, should be used during installation of pipes.
- If pipe is progressing slowly while lowering it into the well, pipe should be filled with well mud from gun or by bucket, pipe should not have any impact to lower it.
- If pipe is installed to the well, no graveling should be implemented, and it should be drawn back and then release again, if pipe is stuck well should be scanned with auger again, and then pipe should be re-lowered to the well.
- Once pipe touches the bottom of the well, it should be drawn back at least 10 cm and suspended, and it should be kept suspended in order to have pipe straight until end of the graveling.
- Gravels should be put continuously as well as evenly and orderly around the equipment pipe by means of a shovel. Thus, keeping pipe straight is maintained.
- It should be noted that gravels should not form bridges especially on the site with silts. If silts are continuously coming out of well but level of the gravel is not reducing, this means that it established a bridge. Urgently measures should be taken and gravel should be tried to be leveled. Otherwise your well shall collapse.
- Pumps with vertical axles or parts related with pump connections should not be mounted on to the pipes.
- An iron sheet pipe should be located at well end except PVC well equipment pipe, and pump should be connected to that pipe. PVC equipment pipe should not carry the pump. (This also disturbs the graveling order).
- Pump selection should be performed with considering the internal diameters of pipes.
- In order to have pipes fully straight within the well, a centering spring should be used for each 8 meters. It should be noted that especially one should be on the lowest closed pipe.



FOR USING MAXIMUM 100 M DEPTH



Outside Diameter		Wall Thickness		Inside Diameter (min) mm	Thread Dimensions	Weight (Blank) kg		
mm	inch	mm	Tolerances mm			2 mt	3mt	4mt
125	4½	5,5	+0,80-0,00	111,4	TR 125x6	6,550	9,600	12,650
140	5½	6,5	+0,90-0,00	125,3	TR 140x6	8,400	12,450	16,500
175	6¾	8,0	+1,00-0,00	157,0	TR 175x6	12,850	19,050	25,250
200	8	9,0	+1,20-0,00	179,6	TR 200x6	16,500	24,500	32,500
225	8¾	10,0	+1,20-0,00	202,6	TR 225x6	20,700	30,700	40,700
280	10¾	12,5	+1,40-0,00	252,2	TR 280x12	32,370	47,900	63,430
330	12¾	14,5	+1,70-0,00	297,6	TR 330x12	44,300	65,550	86,800

FOR USING MAXIMUM 300 M DEPTH

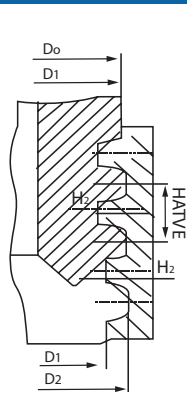


Outside Diameter		Wall Thickness		Inside Diameter (min) mm	Thread Dimensions	Weight (Blank) kg		
mm	inch	mm	Tolerances mm			2 m	3 m	4 m
125	4½	7,1	+0,95-0,00	108,9	TR 125x6	7,750	11,400	15,050
140	5½	8,0	+1,00-0,00	122,0	TR 140x6	10,150	15,050	19,950
175	6¾	10,0	+1,20-0,00	152,6	TR 175x6	15,800	23,500	31,200
200	8	11,5	+1,40-0,00	173,2	TR 200x6	20,880	31,480	41,080
225	8¾	13,0	+1,50-0,00	196,0	TR 225x6	26,360	39,100	51,840
280	10¾	16,0	+1,40-0,00	252,2	TR 280x12	40,800	60,350	79,900
330	12¾	19,0	+2,20-0,00	287,6	TR 330x12	56,850	84,150	111,450



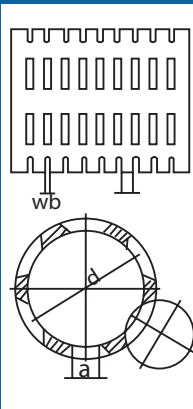
PVC-U FILTERED CASING PIPES DIMENSIONS TABLE

Trapezoidal Thread Dimensions

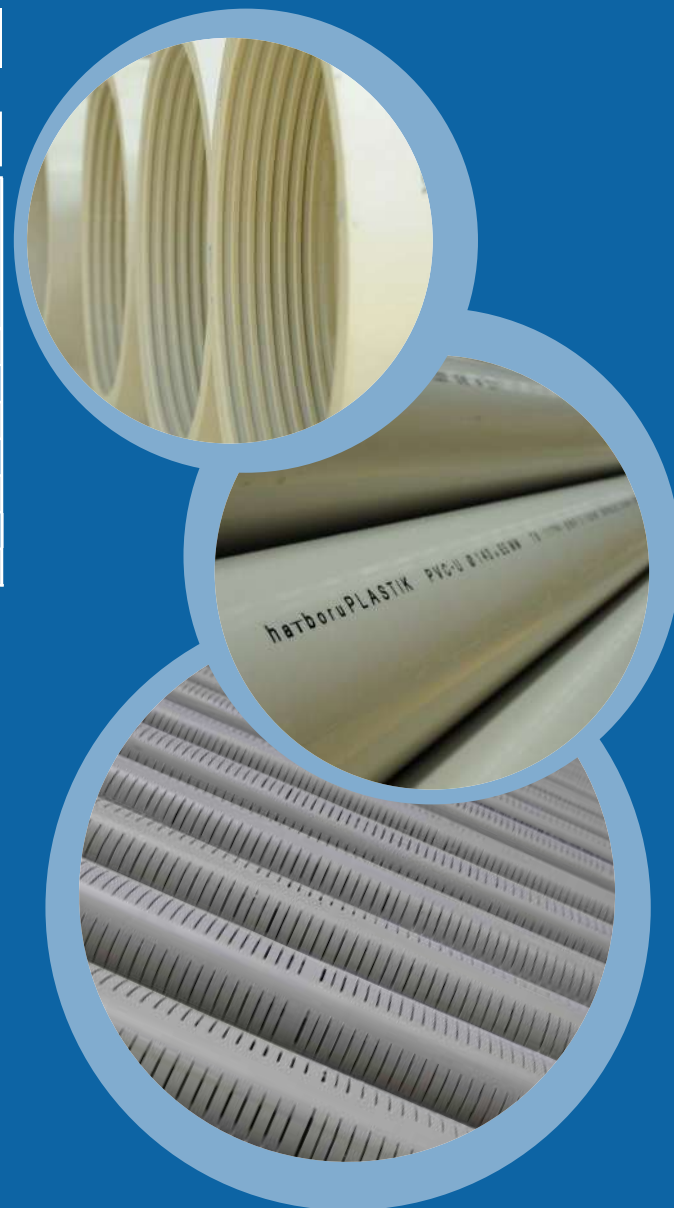


Outside Diameter		D1	D2	d1	H1	H2	HATVE
mm	inch						
125	4 1/2	121,5	125,5	124,5	3,1	2,1	6
140	5 1/2	135,3	140,5	139,5	3,1	2,1	6
175	6 5/8	170,3	175,5	174,5	3,1	2,1	6
200	8	195,3	200,5	199,5	3,1	2,1	6
225	8 3/4	220,3	225,5	224,5	3,1	2,1	6
280	10 3/4	319	279	278	5	4	12
330	12 3/4	389	328	327	5	4	12

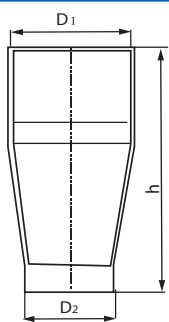
Slot Dimensions



Outside Diameter		Number Of Slots	Width of Slots	Open Area %
mm	inch			
125	4 1/2	5	2	12
140	5 1/2	5	2	12
175	6 5/8	5	2	11
200	8	5	2	11
225	8 3/4	6	2	11
280	10 3/4	6	2	10
330	12 3/4	6	2	10

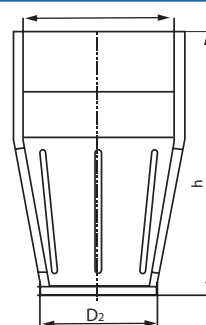


PVC-U FITTINGS DIMENSIONS



REDUCER

D1	D2	h (±25)
113	88	200
125	113	225
140	125	260
175	140	375
200	175	400
225	200	560
280	225	575
330	280	590
400	330	750



SPUR

D	h (±25)
88	200
113	227
125	240
140	257
175	295
200	322
225	348
280	410
330	464
400	541





WELDED STEEL

Well Casing Pipes

Hatboru offers prime quality steel well casings with fast delivery, after sale serving as your solution partner with 49 years of experience. Additional to production of blank, filtered as slot or bridge type carbon steel well pipes Hatboru manufactures stainless steel well pipes upon customer demand.

Blank Well Casing Pipes

Blank Well Casing Pipes are manufactured by Spiral SAW method without slots. Spirally welded blank pipes are manufactured as round pipes by bending steel sheets helically and welding with internally and externally submerged arc welding conforming to related standards.

Blank well casing pipes are manufactured between 4- 12 mm wall thickness and 219- 1016 mm outside diameters conforming to TS EN 10219-1 and DIN 1626 standards.

Filtered Well Casing Pipes

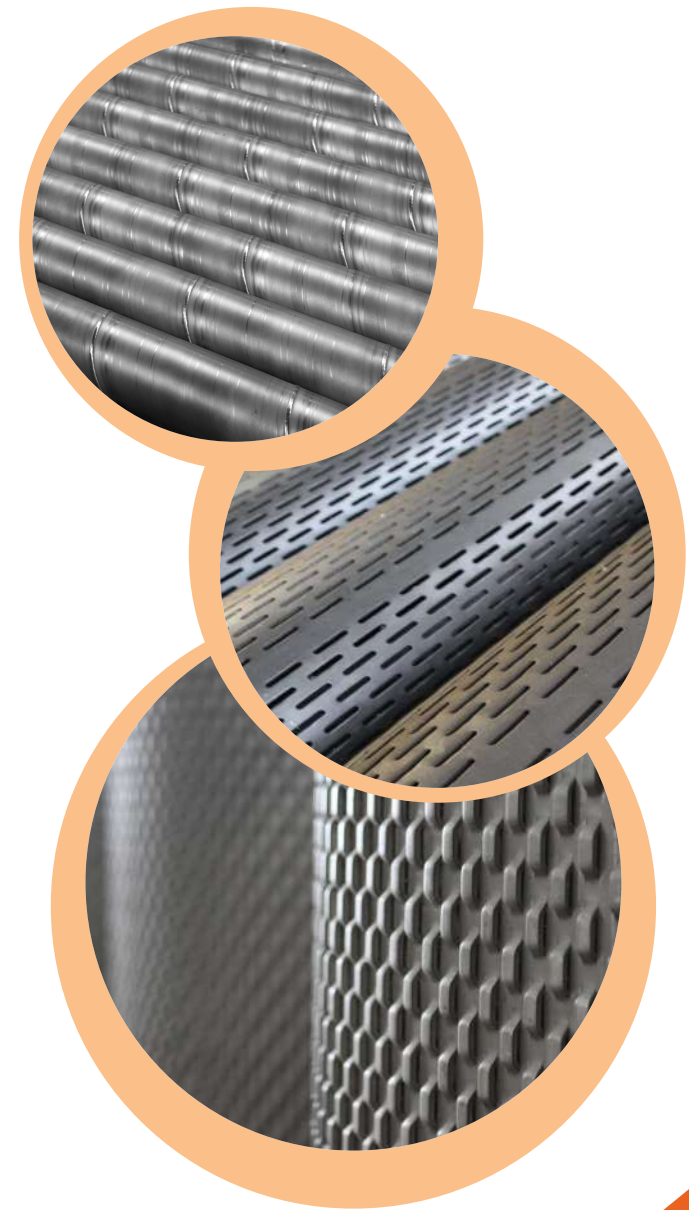
Filtered well casing pipes are manufactured by rounding the slotted sheets to pipe form of 2 m long on longitudinal axis with cylindrical rolls. These rounded sheets are welded on longitudinally by submerged arc welding method to complete the pipe. These 2 meter pieces are connected by welding to obtain multiple lengths as 4 or 8 m length.

Plain Filtered Well Casing Pipes

Plain filtered well casing pipes are generally used through wells in rocks composed of massive, hard limestone, basaltic, andesite, tuff as to be fixed opposing to water deposits including mud leakage, cracks, porous, caves.

Bridge Filtered Well Casing Pipes

Bridge Filtered Well Casing Pipes are generally used through wells in levels including gritty, sandy, silty formations with free lithology as to be fixed opposing to water deposits including mud leakage, cracks, porous, caves if there exists small particles entering into wells.



FILTERED WELL CASING PIPES DIMENSION TABLE



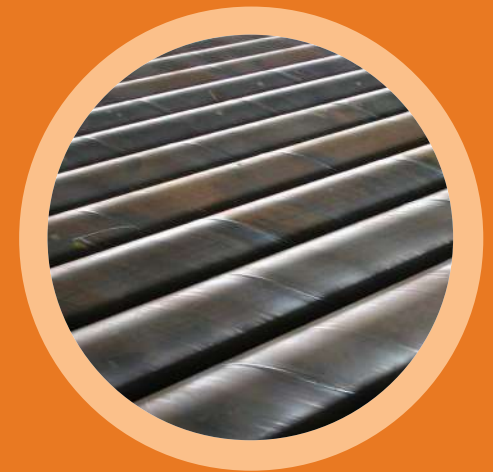
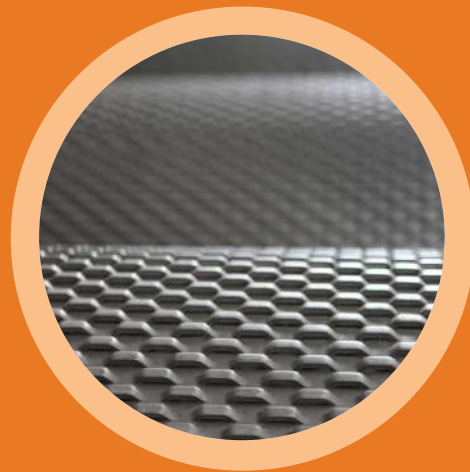
PLAIN FILTERED PIPES					BRIDGE FILTERED PIPES				
----------------------	--	--	--	--	-----------------------	--	--	--	--

NB		Outside Diameter mm	Wall Thickness mm	Weight Kg/m	NB		Outside Diameter mm	Wall Thickness mm	Weight Kg/m
inch	mm				inch	mm			
6 ½	150	168	4	13,50	6 ½	150	168	4	16,88
			5	16,80				5	21,10
8 ⅝	200	219,1	4	17,50	8 ⅝	200	219,1	4	21,20
			5	22,00				5	26,40
			6	26,40				6	32,18
10 ¾	250	273	4	20,50	10 ¾	250	273	4	26,50
			5	27,70				5	33,00
			6	32,91				6	40,11
12 ¾	300	323	4	25,50	12 ¾	300	323	4	31,60
			5	37,00				5	39,30
			6	39,06				6	47,46
14	350	355,6	4	28,61	14	350	355,6	4	34,70
			5	34,56				5	43,20
			6	42,96				6	42,31
16	400	406,4	5	39,60	16	400	406,4	5	49,50
			6	48,95				6	59,66
18	450	457,2	5	39,68	18	450	457,2	5	55,70
			6	55,10				6	67,15
19	480	482,6	5	48,48	19	480	482,6	5	59,15
			6	58,11				6	70,97
20	500	508	5	51,04	20	500	508	5	62,00
			6	61,25				6	74,65



BLANK WELL CASING PIPES DIMENSION TABLE

Outside Diameter (mm)	219	273	324	356	406	457	508	559	610	660	711	762	813	864	914	1016
(inch)	8 ⁵ / ₈ "	10 ³ / ₄ "	12 ³ / ₄ "	14"	16"	18"	20"	22"	24"	26"	28"	30"	32"	34"	36"	40"
Wall Thickness	WEIGHT (kg/m)															
4.0	21.1	26.5	31.6	34.7	39.7	44.7	49.5	54.7	59.8	64.7	59.7	74.8	79.8	84.8	89.8	99.8
4.5	23.8	29.8	35.4	39.0	44.6	50.2	55.9	61.5	67.2	72.7	78.4	84.1	89.7	95.4	101.0	112.0
5.0	26.4	33.0	39.3	43.2	49.5	55.7	62.0	68.3	74.6	80.8	87.1	93.3	99.6	106.0	112.0	125.0
5.6	29.5	36.9	44.0	48.3	55.4	62.3	69.4	76.4	83.5	90.4	97.4	104.0	112.0	119.0	125.0	140.0
6.3	33.1	41.4	49.3	54.3	62.2	70.0	77.9	85.9	93.8	102.0	109.0	117.0	125.0	133.0	141.0	157.0
7.1	37.1	46.6	55.5	61.0	69.9	78.8	87.7	96.6	106.0	114.0	123.0	132.0	141.0	150.0	159.0	177.0
8.0	41.6	52.3	62.3	68.6	78.6	88.6	98.6	109.0	119.0	129.0	139.0	149.0	159.0	169.0	179.0	199.0
8.8			68.4	75.3	86.3	97.3	108.0	119.0	130.0	141.0	152.0	163.0	175.0	186.0	196.0	219.0
10.0			77.4	85.2	97.8	110.0	123.0	135.0	148.0	160.0	173.0	185.0	198.0	211.0	223.0	248.0
11.0				93.5	107.0	121.0	135.0	149.0	162.0	176.0	196.0	204.0	218.0	231.0	245.0	273.0
12.0				102.0	117.0	132.0	147.0	162.0	177.0	192.0	207.0	222.0	237.0	252.0	267.0	297.0





Seamless Steel OCTG Pipes

Seamless steel pipes are manufactured as complete single pipes without any weld conforming to production method. At the beginning steps of manufacturing of seamless pipes is started in general by piercing, rolling or extrusion of round or square hot billets.

Hatboru sales Seamless Casing, Tubing, Drill Pipe and Line Pipes with MTC certificates from stocks by importing from various reliable international sources conforming to API 5CT/ 5D/ 5L/ 5B.

Casing Pipes

Casing pipes are manufactured by using H40, J55, K55, N80-Q, M65, L80, C90, C95, T95, P110 and Q125 steel qualities from low to high mechanical strength conforming to API Standards.

By depending on the well depth and string, outside diameters, wall thicknesses, steel material and thread types of casings are defined with high safety factors. Outside Diameter of Casing pipes varies from 4-1/2" (114,3 mm) to 20" (508 mm)

There are mainly three Standard thread types are available for casing connections. These are STC (Short Thread Casing), LTC (Long Thread Casing) and BTC (Buttress Thread Casing) and they are cut conforming to API 5CT/5B standards. These casing pipes are manufactured for use in hot water, petroleum and natural gas wells. In our workshop thread cutting, slotting and some coatings operations are performed according to API 5CT Standard.

Tubing Pipes

Outside Diameter of Tubing pipes varies from 1,05" (26,7 mm) to 4-1/2" (114,3 mm) according to API 5CT Standard. The same steel materials are used for manufacturing of tubing pipes with casings.

Tubing pipes are manufacture as two types one non-upset (NU) and the other external upset (EU).

Drill Pipes

Drilling pipes from 2 7/8" to 6" OD with various steel materials and connection types are supplied form reliable sources by Hatboru.





hatboru
ÇELİK BORU SAN. TİC. LTD. ŞTİ.



hatboru
PLASTİK BORU SAN.TİC. LTD. ŞTİ.

Factory&Head Office : Antakya Organize Sanayi Bölgesi 6.Yol No:15 Belen
ANTAKYA / HATAY / TURKEY
Tel : +90 (326) 451 21 00 (Pbx) Fax : +90 (326) 451 22 00

e-mail : hatboru@hatboru.com
web : www.hatboru.com



hatboru
ÇELİK BORU SAN. TİC. LTD. ŞTİ.



hatboru
PLASTİK BORU SAN. TİC. LTD. ŞTİ.

Factory&Head Office : Antakya Organize Sanayi Bölgesi 6.Yol No:15 Belen
ANTAKYA / HATAY / TURKEY
Tel : +90 (326) 451 21 00 (Pbx) Fax : +90 (326) 451 22 00

e-mail : hatboru@hatboru.com
web : www.hatboru.com